



9 Sisters Avenue

London. SW11 5SP

T. 020 7223 8865

Effects of “Remote absolute permanent divine protection from anything at all times” of Dr. Prof. Ilija Lakicevic - live blood observations 12 & 18.02.2021

Page 1: The procedure and method. Summary of results.
Page 2: Live blood observations (pictures & video) 12.02.21
Page 3: Live blood observations (pictures & video) 18.02.21
Page 3: Conclusions and additional thoughts

Objective:

To assess the visible effects (if any) on live blood samples observed in phase contrast viewing of “**Remote absolute permanent divine protection from anything at all times with The White Christed Light**”. This was activated for a volunteer who donated to Dr. Prof. Ilija Lakicevic’s dream project entitled “Civilisation without electricity”.

Method:

On 12th February 2021 at approximately 20.45 we observed a sample of finger tip capillary blood at 100x magnification as a base-line measurement of the volunteers blood.

The volunteer (V) was a 42-year-old male, who currently works from home in a demanding job with high computer use. He regularly attends on-line video meetings and wears a blue-tooth headset for long periods.

After completing the base-line testing V read the text outlining the protection being offered and agreed to donate a sum of money in order to acquire the protection offered by Dr. Prof. Lakicevic.

After making a donation V sent an e-mail with requesting Dr. Prof. Lakicevic to activate the protection. The protection was confirmed to be active by Dr. Prof. Lakicevic. Two days later a second blood observation was performed.

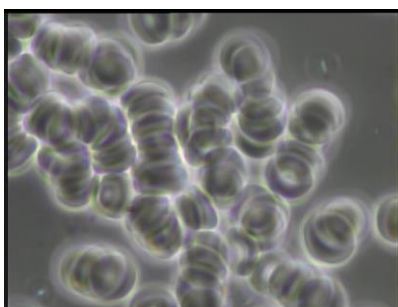
For both observations V had fasted for 4 hours prior to observation.

Summary of results:

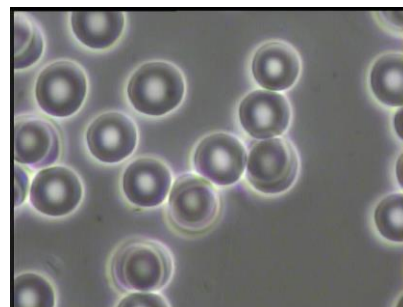
The base-line observation (**1** – below) of V’s blood (12.02.21) on two separate slides showed a high level of rouleau (sticking together of red blood cells) and other ‘anomalies’ that we consider to be associated with health challenges.

Observations of V’s blood at the second viewing (**2** – below), after activating the protection, showed a much greater separation of red blood cells and clearer plasma.

1.



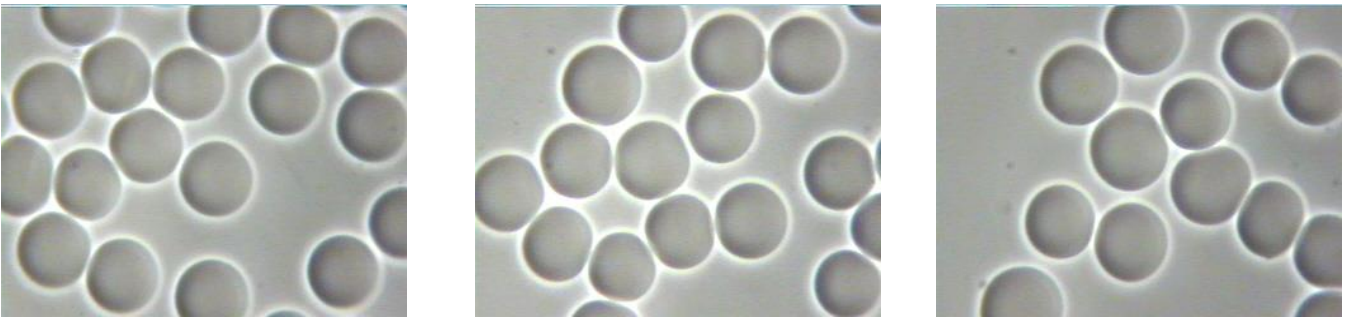
2.



Live Blood pictures:

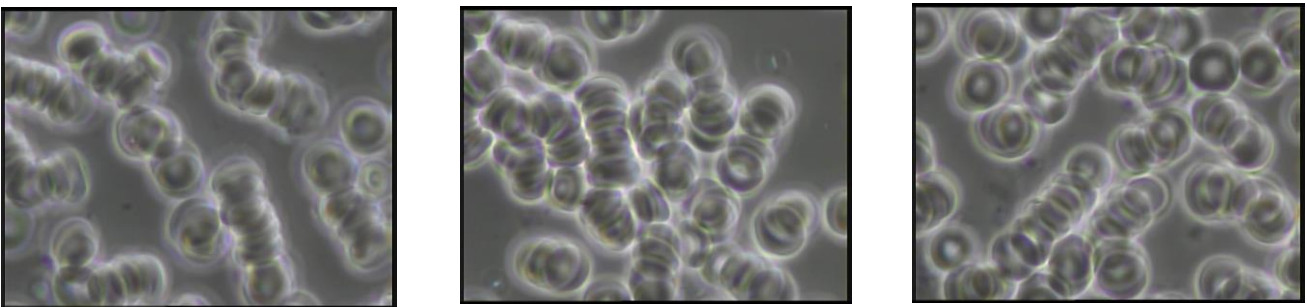
Examples of desired 'healthy' live blood samples (for illustration).

Red blood cells are even in size, residing in their own space with the plasma clear.



1. Live blood samples from base-line viewing before activation of protection:

1.1 Still pictures showing erythrocyte aggregation (rouleau) before activation of protection

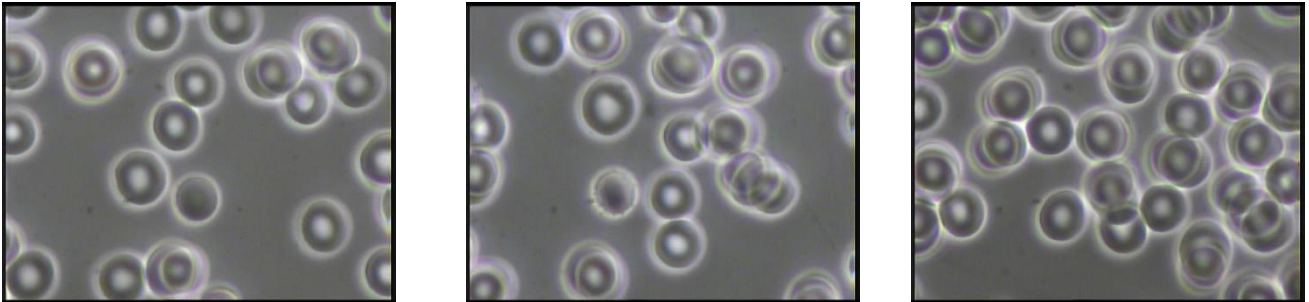


1.2 Video showing erythrocyte aggregation, colloid symplast and brown crystals before activation of protection



2. Second observation after protection was activated:

2.1. Pictures showing a much greater level of erythrocyte separation and clearer plasma after protection was activated:



2.2. Video showing much greater separation throughout the sample in the second observation after protection was activated:



Conclusions and additional thoughts:

The observation of the live blood after the protection was activated showed a marked change. There was much less red blood cell aggregation. This should allow for more effective oxygen delivery throughout the body.

It is worth noticing that the improved picture was observed two days after the protection was activated, suggesting longevity of the effect.